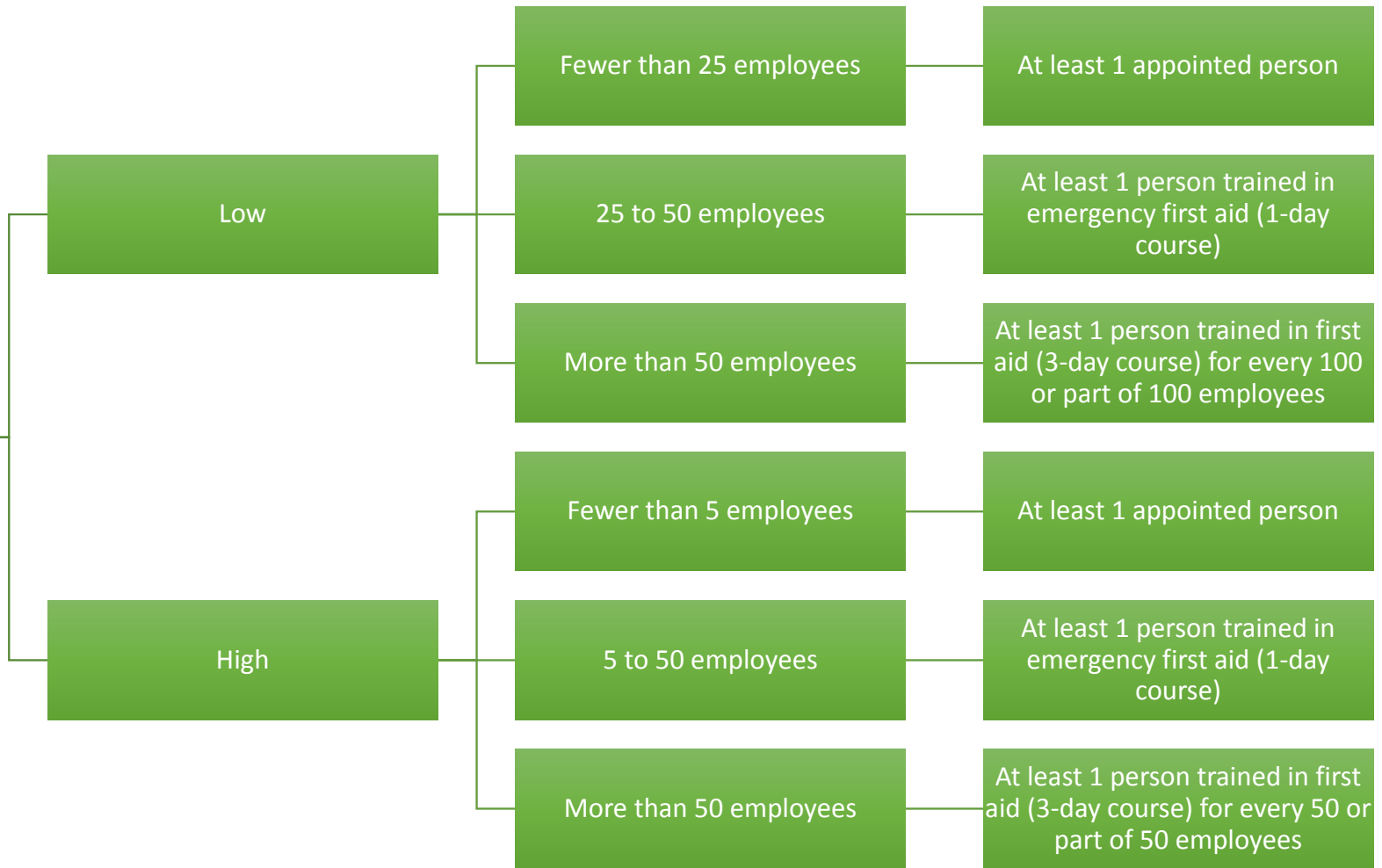


# Risk level



# Roles and responsibilities

## Appointed person

- A manager, supervisor or other responsible person appointed to look after first aid equipment and facilities and to call emergency services if required.
- Provides emergency cover if the appointed emergency first aider or first aider is absent in unforeseen circumstances. This is not sufficient to cover annual leave.

## Emergency first aider

- A first aider trained to deal with the most common emergencies such as stroke, heart attack and injuries.

## First aider

- Someone trained to deal with common emergencies plus a range of other ill-health and injury-related incidents.